


1 Key Concepts


- Resilient and Liveable Cities and Towns
- Water-related Benefits
- Strategic Directions
- Actions





The key message is that Resilient and Liveable Cities and Towns will be delivered through Water-related benefits which are driven by the Strategic Directions which are implemented on the ground through Actions.


2 Old to New

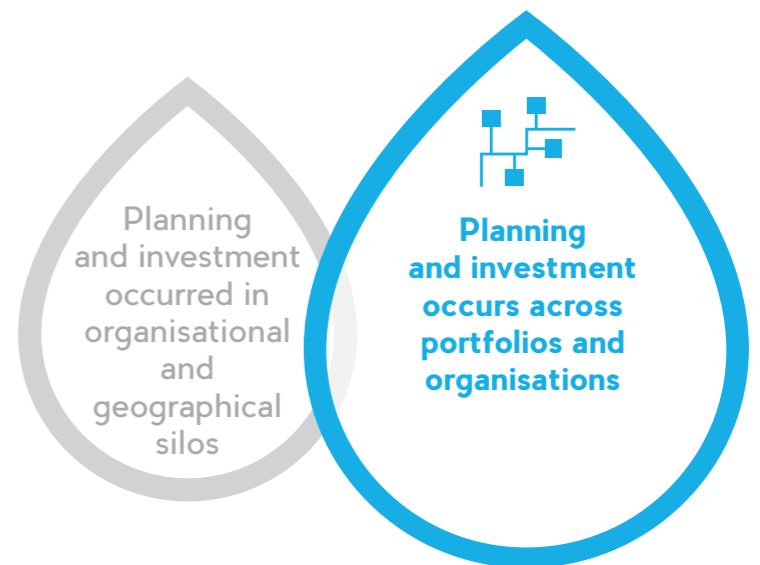
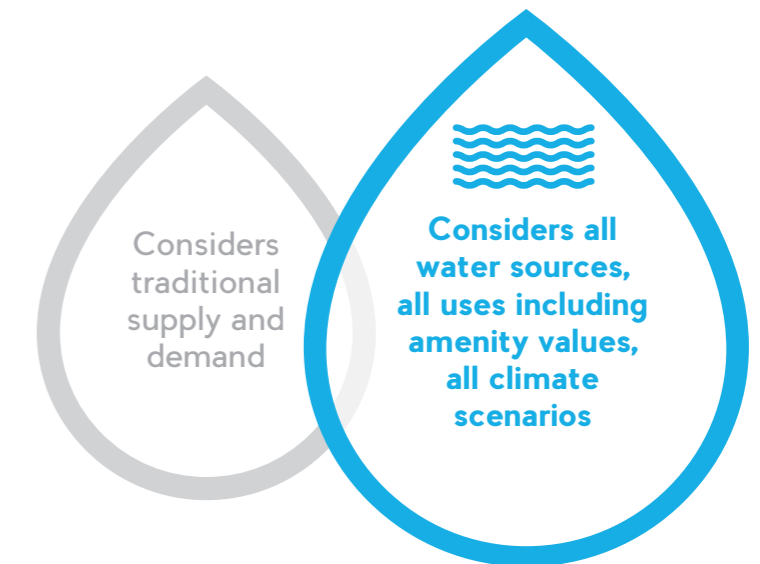
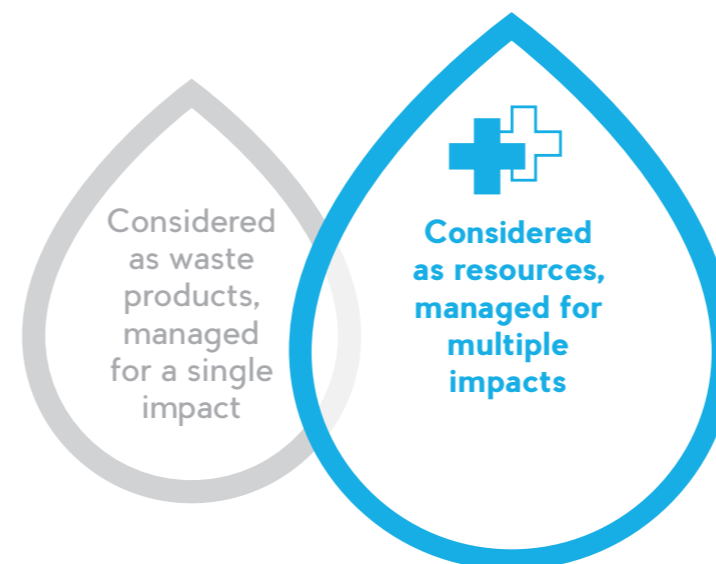
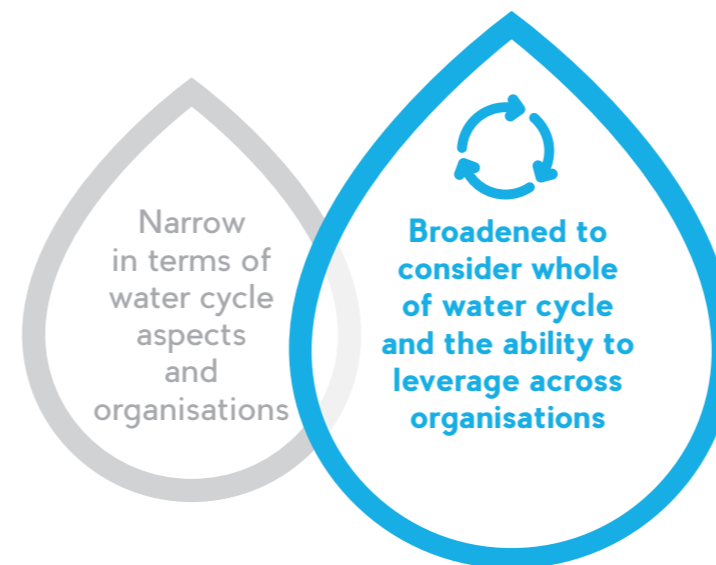
 **Overview of Urban Water Management**
Narrow in terms of water cycle aspects and organisations
Broadened to consider whole of water cycle and the ability to leverage across organisations

 **Strategic Direction 5.1 The water sector and the community will make the most of all sources of water in the urban context**
Considers traditional supply and demand
Considers all water sources, all uses including amenity values, all climate scenarios

 **Strategic Direction 5.2 Stormwater and wastewater will be planned and delivered in ways that protect public health, urban waterways and community assets**
Considered as waste products, managed for a single impact
Considered as resources, managed for multiple impacts

 **Strategic Direction 5.3 Urban water will be aligned across portfolios and organisations**
Planning and investment occurred in organisational and geographical silos
Planning and investment occurs across portfolios and organisations

 **Strategic Direction 5.4 Communities will be empowered as water stewards**
Effective messaging delivered generically across community
Place-based and contextual information provided to reflect community diversity and knowledge



3 Integrated Water Management Planning



The key message is that water-related benefits will be delivered through this planning process, which increases in granularity with each step down from the catchment level through to the organisational level.